

16324 Nauticam Cinema System Gear Set for Micro-Nikkor 70-180

Instruction Manual

FOREWORD

Thank you for your purchase of a NAUTICAM product.

At NAUTICAM, we pride ourselves in the ability to recognize the requirements of professional as well as amateur underwater photographers and fulfill them through the innovative designs of our products. We strive to achieve a high level of user-friendliness by allowing stress-free installation and easy operation of all important functions of the camera.

Please read this manual carefully before using the product, this will maximize its performance as well as its lifetime.

WARRANTY

All NAUTICAM Products are warranted against any material and manufacturing defects for two years from the date of purchase for consumer use. This warranty only applies to products purchased from authorized NAUTICAM dealers and does not extend beyond the original retail purchaser.

To return your product for service, please contact your regional authorized service centre(s). Please note that this warranty only applies when the product is purchased in the territory where the service centre is located.

NAUTICAM does not hold responsibility for damage, of any nature, to any equipment used with and/or placed within our products.

NAUTICAM accepts no liability for any loss of captured images or the inability to capture images even if it is due to the malfunctioning of our products.

Unauthorized modifications and/or repairs of our products will automatically invalidate the warranty.

IDENTIFICATION OF PARTS


Nikkor 70-180 Focus gear


Nikkor 70-180 Zoom gear

Focus C-ring

Zoom C-ring

Support ring

6x  Spare Rubber grips for C-ring

4x  Spare Rubber grips for Support ring

HOW TO DISTINGUISH FOCUS AND ZOOM C-RINGS

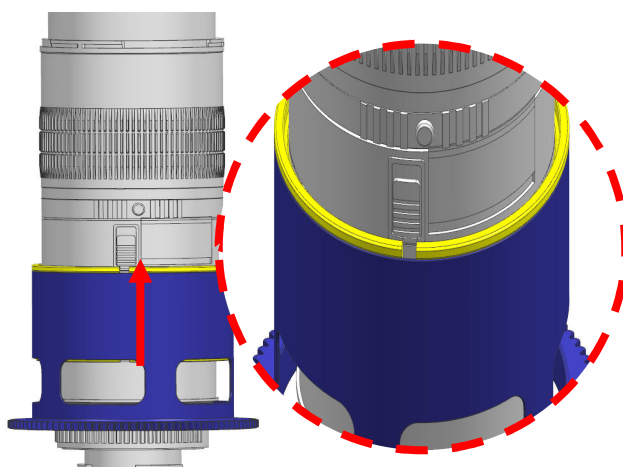


The zoom C-ring is longer than focus C-ring.

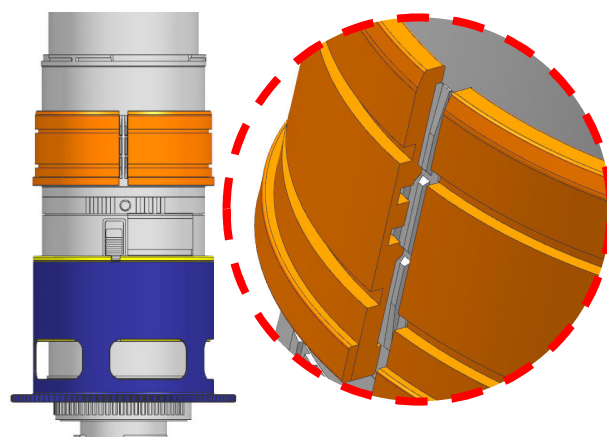
MOUNTING THE GEAR ON A LENS



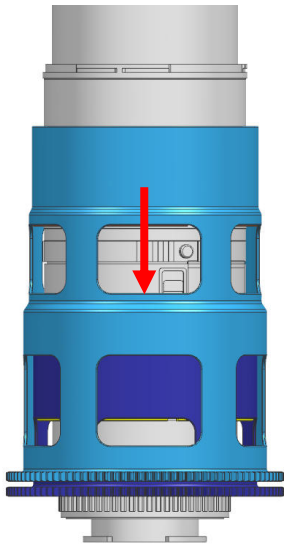
1. Insert the zoom c-ring as shown and place it over the lens. Make sure the flange of the c-ring upwards



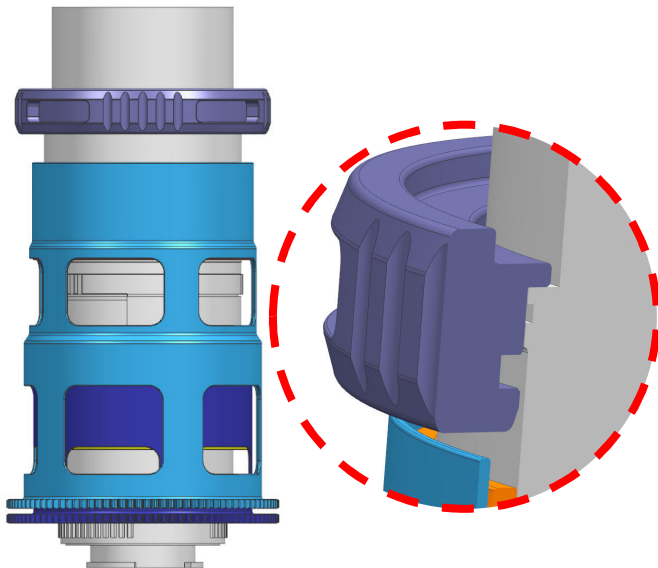
2. Insert the Nikon 70-180 zoom gear on the zoom c-ring until it reaches the flange of the zoom c-ring.



3. Insert the focus c-ring as shown and place it over the lens. Make sure the flange of the c-ring downwards



4. Insert the Nikon 70-180 focus gear on the focus c-ring, then gently push down the gear towards the bottom until it cannot go any further as zoom gear



5. Insert the support ring as shown and lace it over the lens.

To remove the gear set, reverse the above steps.

The tightness between the Nauticam Cinema System Gear Set for Micro-Nikkor 70-180 and the lens can be adjusted by removing or adding rubber grips on either sides of the c-rings, spare rubber grips are included in the package.